



A day in the life of an educator's handheld



Presentation

- Follow an educator throughout a regular work day
- Short video clips
- Overview of applications
- Web page:
 - <http://kathyschrock.net/dayinthelife/>

©2004, Kathy Schrock. All rights reserved.



Production team

- Written and produced by Kathy Schrock
- Videographers
 - Rockwell Schrock Mary Stack
 - John Krenik Ginny Ogden
- Starring
 - Kathy Schrock
 - Students James, Rachel and Melissa from Nauset Middle School, Orleans, MA

©2004, Kathy Schrock. All rights reserved.



Palm OS Handheld

- Tungsten C
 - 802.11b connectivity
 - Built-in thumb board
 - Fast processor
 - Lots of memory
- Tungsten T3
 - Stereo audio
 - Stretchable



©2004, Kathy Schrock. All rights reserved.



Alternatives



Palm to phone cable



Enfora LAN Portfolio



Kyocera 7135

©2004, Kathy Schrock. All rights reserved.



For this presentation



Linksys wireless access point



Handheld with 802.11b connectivity

©2004, Kathy Schrock. All rights reserved.



Overview of format

5:00-6:00 am

- Wake up
- Exercise
- Read newspaper

Video

5-6 am: Applications

- Wake up- Big Clock
- Exercise- RealOne Player
- Newspaper- Avanti

Applications

Big Clock

Explanation

RealOne Player

Explanation

©2004. Kathy Schrock. All rights reserved.



5:00-6:00 am

- Wake up
- Exercise



©2004. Kathy Schrock. All rights reserved.



5-6 am: Applications

- Wake up- Big Clock
- Exercise- RealOne Player
- Exercise- Sony Portable Speakers

©2004. Kathy Schrock. All rights reserved.



Big Clock



©2004. Kathy Schrock. All rights reserved.



RealOne Player

Title: All I Have To Do Is Dream
Artist: Christine Lavin
Album: Beau Woes and Other P
Genre: Folk
Track #: 10
Format: 128k Mp3
Size: 2.7MB
Filename: All I Have To Do Is Dream - A Summer Song.mp3

Done

Songs Playlists

©2004. Kathy Schrock. All rights reserved.



Sony Portable Speakers

Sony Personal Travel Speakers

- (SRS-T55)
- Plugs into headphone jack
- Fold up for easy carrying
- Uses 4 AA batteries
- \$50



©2004. Kathy Schrock. All rights reserved.



6:00 – 7:00am

- Read newspaper
- Check e-mail
- Check task list
- Make shopping list



©2004. Kathy Schrock. All rights reserved.



6-7 am: Applications

- Newspaper- Avantgo or WebPro
- Email- EudoraMail
- Tasks- ToDo
- Shopping list- HandyShopper

©2004. Kathy Schrock. All rights reserved.



AvantGo and WebPro



AvantGo

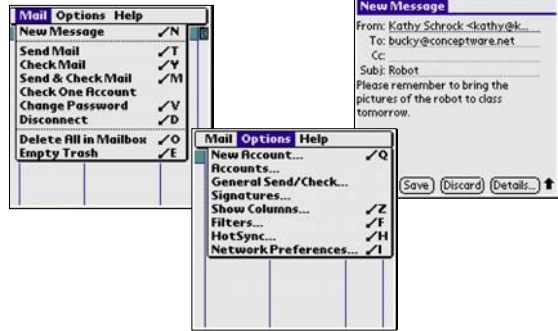


WebPro Browser

©2004. Kathy Schrock. All rights reserved.



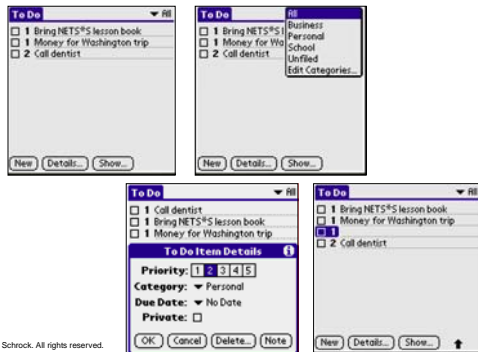
EudoraMail



©2004. Kathy Schrock. All rights reserved.



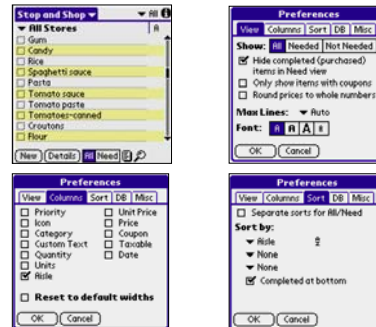
To Do List



©2004. Kathy Schrock. All rights reserved.



Handy Shopper



©2004. Kathy Schrock. All rights reserved.



7:00 – 8:00 am

- Audiotapes
- Staff meeting



©2004. Kathy Schrock. All rights reserved.



7-8 am: Applications

- Audiotapes:
 - RealOne Player
 - Stereo hardware
- Staff meeting: Keyboard



©2004. Kathy Schrock. All rights reserved.



8:00 – 9:00 am

- Homework collection
- Signed note
- Lunch count
- Lesson agenda
- Waterfall beaming



©2004. Kathy Schrock. All rights reserved.



8-9 am: Applications

- Homework collection- MemoPad
- Signed note- NotePad
- Lunch count- SmartList
- Lesson agenda- MemoPad

©2004. Kathy Schrock. All rights reserved.



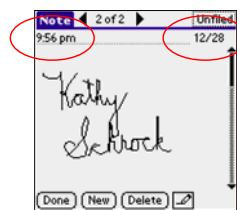
MemoPad: HW



©2004. Kathy Schrock. All rights reserved.



NotePad: Parent note



©2004. Kathy Schrock. All rights reserved.

SmartList to Go: Lunch

©2004. Kathy Schrock. All rights reserved.

Memo Pad: Agenda

©2004. Kathy Schrock. All rights reserved.

9:00 – 10:00 am

- Social studies
 - Cost of goods
- Science
 - Weight on other planets

©2004. Kathy Schrock. All rights reserved.

9-10 am: Applications

- Cost of goods: Inflation Master
- Weight on other planets: Cells

©2004. Kathy Schrock. All rights reserved.

Inflation Master

©2004. Kathy Schrock. All rights reserved.

Cells

Planet	Weight in Earth	Weight in 100 lbs
1. Planet 1	100	100
2. Mars	378	37.8
3. Pluto	6.7	0.67
4. Moon	14.4	1.44
5. Mars	37.7	3.77
6. Jupiter	236.4	23.64
7. Saturn	186.4	18.64
8. Uranus	88.9	8.89

©2004. Kathy Schrock. All rights reserved.



10:00 – 12:00 pm

- Math lesson- Order of operations
- Art project
- ELA lesson- Homophones



©2004. Kathy Schrock. All rights reserved.



10am-12 pm: Applications

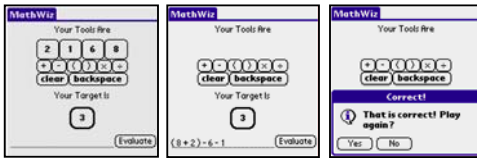
- Math order of operations: MathWiz
- Art project: Tessellation
- ELA homophone lesson: Sketchy

©2004. Kathy Schrock. All rights reserved.



MathWiz

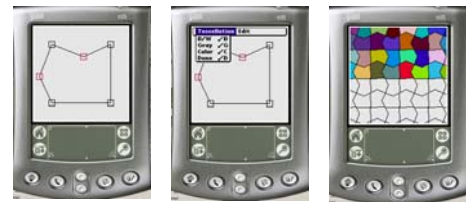
- Students are presented with 4 random numbers between 1 and 10 and given a 5th random number
- Students must use the math operations to produce the target answer



©2004. Kathy Schrock. All rights reserved.



Tessellation



©2004. Kathy Schrock. All rights reserved.



Sketchy



©2004. Kathy Schrock. All rights reserved.



12:00 – 1:00 pm

- Lunch curriculum meeting



©2004. Kathy Schrock. All rights reserved.



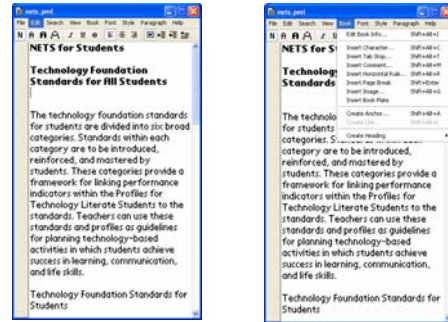
12-1 pm: Applications

- Lunch curriculum meeting
 - Palm eBook Studio
 - Palm Reader
 - E-book of standards
 - Palm presentation device

©2004. Kathy Schrock. All rights reserved.



Palm eBook Studio

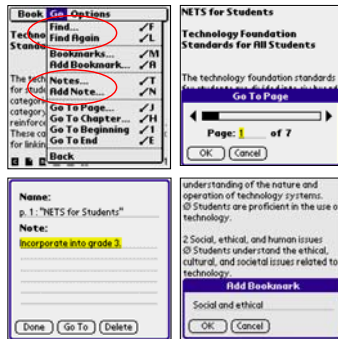


©2004. Kathy Schrock. All rights reserved.



ISTE NETS*S in PalmReader

understanding of the nature and operation of technology systems.
 ⓐ Students are proficient in the use of technology.
 2. Social, ethical, and human issues
 ⓐ Students understand the ethical, cultural, and societal issues related to technology.
 ⓐ Students practice responsible use of technology systems, information, and software.
 ⓐ Students develop positive attitudes:



©2004. Kathy Schrock. All rights reserved.



Handheld presentations



Margi Presenter-to-Go

iGo Pitch Duo

©2004. Kathy Schrock. All rights reserved.



1:00 – 2:00 pm

- Computer class
 - Storyboard
 - Photos
 - Movie



©2004. Kathy Schrock. All rights reserved.



1-2 pm: Applications

- Storyboard: PicoMap
- Photos: Veo Photo Traveler
- Movie: Kinoma Producer/Player

©2004. Kathy Schrock. All rights reserved.

PicoMap

©2004. Kathy Schrock. All rights reserved.

VeoTraveler

©2004. Kathy Schrock. All rights reserved.

Kinoma Player and Studio

©2004. Kathy Schrock. All rights reserved.

2:00 – 3:00 pm

- PE
- Consumer Science

©2004. Kathy Schrock. All rights reserved.

2 – 3 pm: Applications

- PE: Stopwatches
- Consumer Science: Converter

©2004. Kathy Schrock. All rights reserved.

Stopwatches

©2004. Kathy Schrock. All rights reserved.

Converter

©2004. Kathy Schrock. All rights reserved.

3:00 – 4:00 pm

- Study group

©2004. Kathy Schrock. All rights reserved.

3-4 pm: Applications

- Study Group
 - Splash
 - BooksLog

©2004. Kathy Schrock. All rights reserved.

GSS Splash

- Personalized splash screen shown when you turn off your handheld
- Also shows handheld "name"

©2004. Kathy Schrock. All rights reserved.

BooksLog

©2004. Kathy Schrock. All rights reserved.

4:00 – 5:00 pm

- Grocery store
- Video store

©2004. Kathy Schrock. All rights reserved.



4-5 pm: Applications

- Grocery store: Handy Shopper
- Video store: MovieTracker

©2004. Kathy Schrock. All rights reserved.



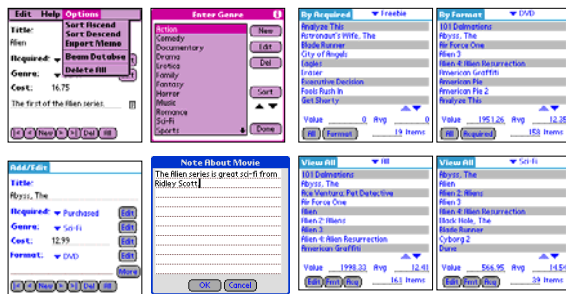
Handy Shopper



©2004. Kathy Schrock. All rights reserved.



Movie Tracker



©2004. Kathy Schrock. All rights reserved.



5:00 – 6:00 pm

- Recipe
- Weather
- Shopping



©2004. Kathy Schrock. All rights reserved.



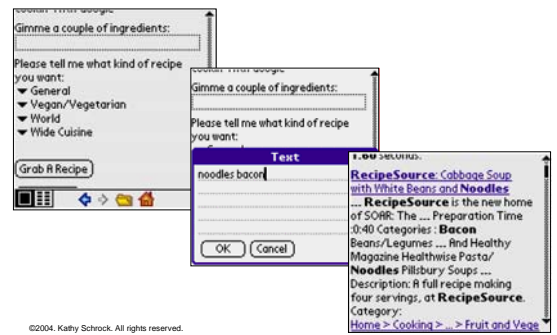
5-6 pm: Applications

- Recipe: Goo Cookin'
- Weather/Shopping: WebPro Browser

©2004. Kathy Schrock. All rights reserved.



Cookin' With Google



©2004. Kathy Schrock. All rights reserved.

WebPro

©2004. Kathy Schrock. All rights reserved.

6:00 – 7:00 pm

- Correcting
- Blogging
- Planning

©2004. Kathy Schrock. All rights reserved.

6-7 pm: Applications

- Correcting: Memo Pad
- Blogging: motime.com
- Planning: ThoughtManager

©2004. Kathy Schrock. All rights reserved.

Blog: handhelds.motime.com

Reading the Web log postings Sending a new posting via e-mail

©2004. Kathy Schrock. All rights reserved.

Thought Manager

©2004. Kathy Schrock. All rights reserved.

7:00 – 9:00 pm

- Television
- Reading

©2004. Kathy Schrock. All rights reserved.



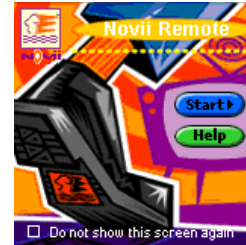
7-9 pm: Applications

- **Television: NoviiRemote**
 - NoviiRemote
 - Wireless TV Guide site
- **Reading: Palm Reader**

©2004. Kathy Schrock. All rights reserved.



NoviiRemote



©2004. Kathy Schrock. All rights reserved.



Wireless TV Guide Site

Main Menu

TV Listings
TV PICKS
Insider

Provider

Eastham - Comcast Cable
zipcode
02642

CHANGE
CANCEL

TV Listings

1/12/2004 10:00 PM
Change Hour/Data

2 WGBH <American Experience>
3 COMTV Sports Pulse>
4 WRZ CSI: Miami>
5 WCVB <News Repeat>
6 WLNE <News Repeat>
7 WHDH <Las

American Experience

Ch 2 WGBH
Start 10:00PM Mon, 1/12
90 Minutes
Rated: TV-PG
Category: other

Reconstruction: The Second Civil War, a two-part report, chronicles one of the most contentious periods in American history. Part 1 does so mostly in textbook fashion, recounting a standard political history using the standard

©2004. Kathy Schrock. All rights reserved.



PalmReader



©2004. Kathy Schrock. All rights reserved.



9:00 pm


- **Lights out!**



©2004. Kathy Schrock. All rights reserved.



Handhelds in other occupations



Civil Engineering

Aquifer Monitoring Software

Task and Project Management Software

CAD



Healthcare

Field Patient Data Collection

English-Spanish Medical Dictionary

Drug Reference Tool

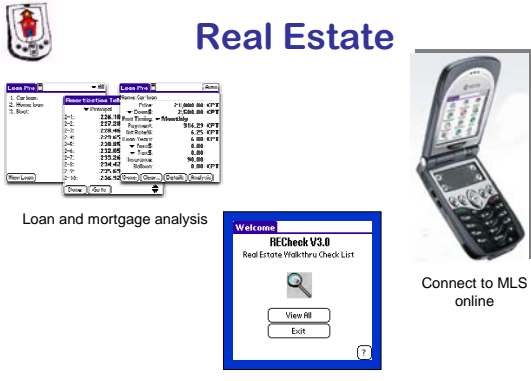


Farming/Agriculture

Boundaries, soil samples, and field data

GPS to guide tractors

Data collection



Real Estate

Loan and mortgage analysis

Walk-through checklist

Connect to MLS online



Building Trades

Wireless field deployment with GPS, templates, etc.

Job quote software

Specialized calculators




Business Marketing

TV/VCR/DVD remote

Presenter-to-Go

Meeting manager



Attorney

List of Case

Case	Client	Opp.	Date
Mr. K	Mr. Moko	Mr. Kim	12.2.02
Mr. K	Mr. Jim	Mr. Kohle	13.2.02

SDS Time 2003

Project	Mon	Tue	Wed	Thu	Fri	Sat	Sun
Project 1	3.5	9	12.5				
Project 2	4						
Total	8	17.5	9	12.5	0	0	0

FEDERAL RULES OF EVIDENCE FOR 2003

- Table of Contents
- Browse by Rule
- Regimes of Text
- Disclaimer

Client and case information
Billable hours
Law reference tool



Police Officer

Palm OS Emulator


Incident management

Results Form

Online database search




Check e-mail



Food Service

Inventory Assistant

Name	Qty	Unit
Hot Sauce	3	bott
Ketchup Bottled	4	per
Mustard	4	per
Shortening, Liquid	4	per
Sherry, Cooking	4	gal
Croutons, Garlic	4	lb
Sugar Pockets	4	case




Food safety with temperature probes


Order Assistant

Name	Qty	Unit
Canned And Dry	4	per
Spaghetti For	4	per
Candy M&M Peanut	4	per
Candy, S'more Fruit	4	per
Cereal, Rice Flavor	4	per
Cereal, Cheerio	4	per
Cereal, Oatmeal Bld	4	per
Cereal, Oatmeal Bm	4	per



Inventory control
Food safety with temperature probes
Ordering assistant




Good books



Caughlin, Janet and Tony Vincent.
Handhelds for teachers and administrators.
 Tom Snyder, 2003.

Midge Frazel and Joe Souza.
Tips and tricks for using handhelds in the classroom. Teacher Created Materials, 2003.

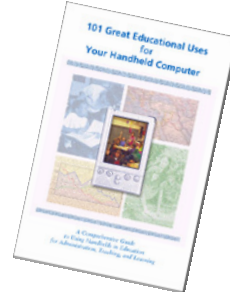




Michael Curtis, et.al..
Palm handheld computers: a complete resource for classroom teachers. ISTE, 2003.



Karen Fasimpaur.
101 great educational uses for your handheld computer. K12 Handhelds, 2003.



Jim Hirsch, Mary Hewett, and Candy Atwood.
Palmtops: Computing @ every student. FTC, 2002.



The End

Online support page:
<http://kathyschrock.net/dayinthelife/>

Questions?
kathy@kathyschrock.net